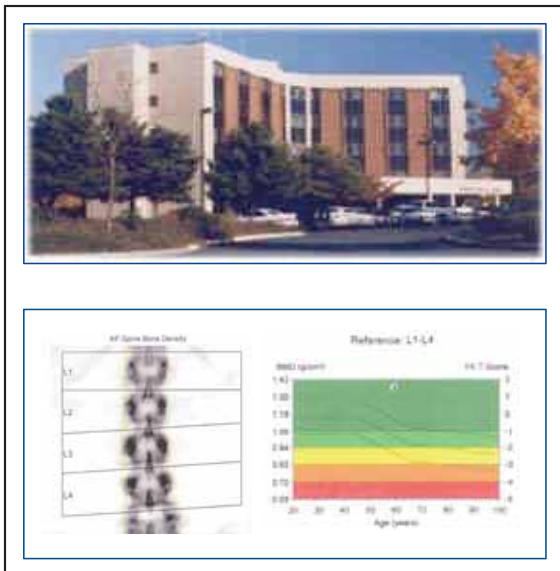


Reducing BMD Report Turnaround Times

Adventist Medical Center
Portland, Oregon

Adventist Medical Center in Portland, Oregon has an active Women’s Health program and performs over 1,500 bone mineral density (BMD) studies per year. Their Lunar Bone Mineral Density scanner produces an excellent graphical report that referring physicians find useful. Before PACS, Adventist provided both the Lunar BMD report and the radiologist’s report, typically via fax or mail.



After installing PACS, however, a problem emerged. Although the radiologist’s report could be sent electronically, the graphical Lunar BMD report was not compatible with PACS. Adventist’s initial solution was to continue to mail or fax the Lunar BMD report, which would usually arrive later than the radiologist’s report.

During the PACS planning process, thought was given to interface the Lunar system to PACS to enable electronic report distribution to referring physicians. “However, we really couldn’t find a practical solution for a direct interface,” says David Lucia, PACS Administrator at Adventist. “We were using PacsSCAN to send other patient documents to PACS and were about implement this approach for bone density studies when we found out about Print2PACS.”

“Print2PACS has been tremendously helpful in reducing the steps to get our bone density reports to referring physicians.”

*David Lucia, PACS Administrator
Adventist Medical Center*

Print2PACS™ eliminates the “print/scan” cycle by directly sending any Windows-printable document to PACS. At the BMD scanner, Print2PACS converts the report output to a DICOM object which is then sent to PACS for referring physicians. Print2PACS is often used to send documents to PACS, such as Microsoft Word; PDF; EHR/EMR; and RIS information.

“Print2PACS has been tremendously helpful in reducing the steps to get our bone density reports to referring physicians,” says David. “We not only eliminate the step of printing and scanning the report, but also shredding printed reports after scanning for HIPAA compliance. Plus, we have decreased our report turnaround time.”

 **Get Started** For more information about PACSGEAR’s document and multimedia connectivity solutions, contact us at (925) 846-9600 or email getstarted@pacsgear.com